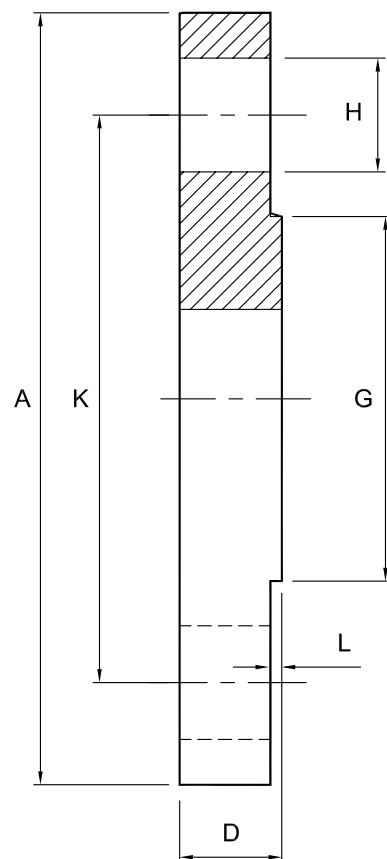


Flange PN16 - 316L

Nom size	A	D	G	H	K	L	No HOLES	Max Op @ 150°C Pressure (bar)	Stock No
1"	115.0	16.0	68.0	14.0	85.0	2.0	4	10	7010-6026
1½"	150.0	18.0	88.0	18.0	110.0	3.0	4	10	7010-6038
2"	165.0	20.0	102.0	18.0	125.0	3.0	4	10	7010-6051
2½"	185.0	20.0	122.0	18.0	145.0	3.0	4	10	7010-6064
3"	200.0	20.0	138.0	18.0	160.0	3.0	8	10	7010-6076
4"	220.0	22.0	158.0	18.0	180.0	3.0	8	10	7010-6102
5"	250.0	22.0	188.0	18.0	210.0	3.0	8	10	7010-6125
6"	285.0	24.0	212.0	22.0	240.0	3.0	8	10	7010-6154

ALL FLANGES BORED TO SUIT TUBE OR PIPE AS REQUIRED



Technical Data:

- Material: 316L Stainless Steel
- Finish: 1.6-3.2 Ra Std., other finishes available
- Pressure/Temperature: See above
- Associated standards: BS EN 1092-3
- Applications : high pressure non-hygienic applications
- Tolerance: +/- 0.5mm
- Seals: EPDM, Silicone, Viton®, Nitrile, Encapsulated & Solid PTFE

- We also stock a comprehensive range of hygienic stainless steel fittings and components including tank manways, sightglasses, sprayballs, filters, as well as clamp, RJT, IDF, DIN, SMS, BSP, Flange, Plain-ended tube and pipe fittings
- Components can be fabricated to customer specification
- Fabrication capabilities include frameworks, skid mounted systems, manifolds, jacketed assemblies, adaptors, flowplates and spool pieces.
- In-house services include machining, welding, fabrication, polishing.

D7010-V02/ECN160

NOTES

- Dimensions are provided in good faith but maybe subject to change
- Seals must be chosen for required operating medium & temperature