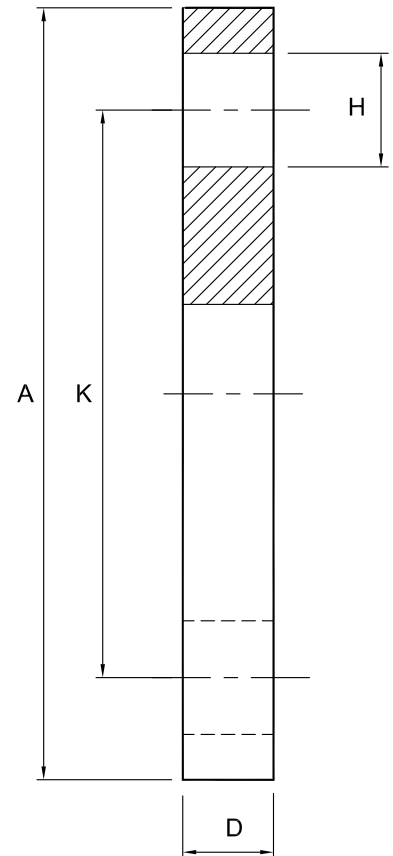


Flange Table E - 316L

Nom size	A	D	H	K	No HOLES	Max Op @ 150°C Pressure (bar)	Stock No
1/2"	95.2	6.35	12.7	66.6	4	10	7009-6013
1"	114.3	7.14	12.7	82.5	4	10	7009-6026
1½"	133.3	8.73	12.7	98.4	4	10	7009-6038
2"	152.4	9.52	15.8	114.3	4	10	7009-6051
2½"	165.1	10.31	15.8	127.0	4	10	7009-6064
3"	184.1	11.11	15.8	146.0	4	10	7009-6076
4"	215.9	12.7	15.8	177.8	8	10	7009-6102
6"	279.4	17.46	15.8	234.9	8	10	7009-6154
8"	336.5	19.05	15.8	292.1	8	10	7009-6204
12"	457.2	25.4	19.0	406.4	8	10	7009-6304

ALL FLANGES BORED TO SUIT TUBE OR PIPE AS REQUIRED



Technical Data:

- Material: 316L Stainless Steel
- Finish: 1.6-3.2 Ra Std., other finishes available
- Pressure/Temperature: See above
- Associated standards: BS10:62
- Applications : high pressure non-hygienic applications
- Tolerance: +/- 0.5mm
- Seals: EPDM, Silicone, Viton®, Nitrile, Encapsulated & Solid PTFE

- We also stock a comprehensive range of hygienic stainless steel fittings and components including tank manways, sightglasses, sprayballs, filters, as well as clamp, RJT, IDF, DIN, SMS, BSP, Flange, Plain-ended tube and pipe fittings
- Components can be fabricated to customer specification
- Fabrication capabilities include frameworks, skid mounted systems, manifolds, jacketed assemblies, adaptors, flowplates and spool pieces.
- In-house services include machining, welding, fabrication, polishing.

D7009-V02/ECN160

NOTES

- Dimensions are provided in good faith but maybe subject to change
- Seals must be chosen for required operating medium & temperature

FORM No:FM002-V02
 (T) +44 (0)1792 883 882
 (F) +44 (0)1792 886 049
 (E) info@axiumprocess.com
 (W) www.axiumprocess.com