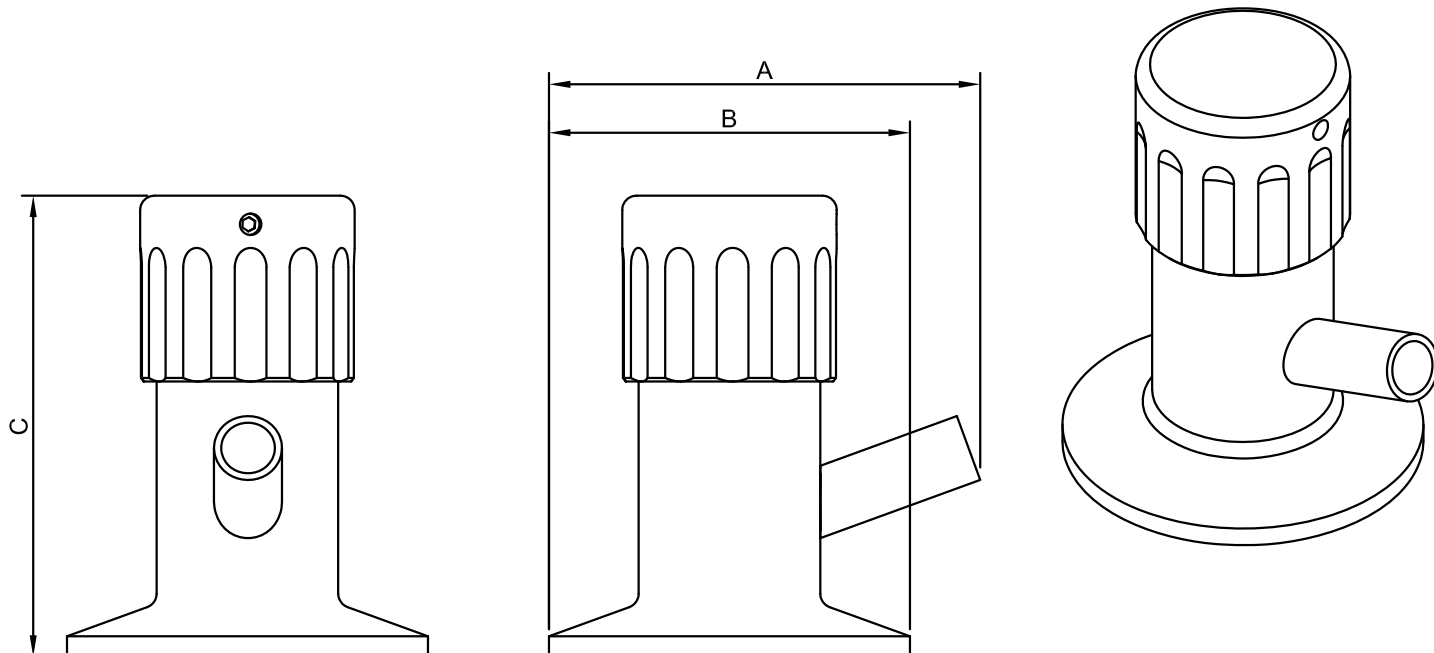


Sample Valve, 1.5" Clamp, 4mm entry port, single sided, p/e



Nom size	A	B	C	Max Op Pressure (bar) @ 20°C	Handle Material	Stock No
1"/1.5"	60.0	50.5	64.5	10	Stainless Steel	5500-6026
1"/1.5"	60.0	50.5	64.5	10	Acetal - Black	5500-6026-AC-BK
1"/1.5"	60.0	50.5	64.5	10	Acetal - Blue	5500-6026-AC-BL
1"/1.5"	60.0	50.5	64.5	10	Acetal - Green	5500-6026-AC-GN
1"/1.5"	60.0	50.5	64.5	10	Acetal - Red	5500-6026-AC-RD
1"/1.5"	60.0	50.5	64.5	10	Acetal - Yellow	5500-6026-AC-YL

- Colour coded handles for accurate identification of pipeline sample points
- Ports/Connections: 3mm port on a 0.5" clamp and 8mm port available.
- 1/2" clamp, RJT, DIN, SMS, IDF BSP and Plain-Ended options available

Technical Data:

- |  |   |
|--|---|
| <ul style="list-style-type: none"> <li>• Material: 316L Stainless Steel</li> <li>• Boot: FDA Approved Santoprene 281-64MED</li> <li>• Finish: 0.8RA or better</li> <li>• Pressure/Temperature: 10 Bar/0-100°C operating temperature</li> <li>• Associated standards: BS 4825 : Part 3 : 1991 (1" to 4" inclusive)</li> <li>• Applications : Designed for manual sampling duties</li> </ul> | <ul style="list-style-type: none"> <li>• Tolerance: +/- 0.5mm</li> <li>• Clamp Seals: EPDM, Nitrile, Silicone, Platinum Cured Silicone, Encapsulated &amp; Solid PTFE, Viton®<br/><small>Viton® is a registered trademark of DuPont Dow Elastomers</small></li> </ul> |
|--|---|

NOTES

- Dimensions are provided in good faith but maybe subject to change
- Seals must be chosen for required operating medium & temperature