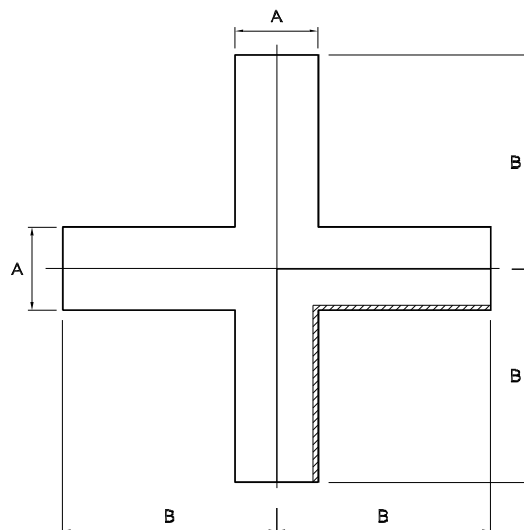


## 8083

### Plain-ended equal cross piece 316L

Nom size	A	B	Stock No
1"	25.4	65.0	8083-6026
1 1/2"	38.1	85.0	8083-6038
2"	50.8	110.0	8083-6051
2 1/2"	63.5	135.0	8083-6064
3"	76.2	155.0	8083-6076
4"	101.6	195.0	8083-6102



TECHNICAL DATA	
Associated Standards	BS 4825 : Part 2 : 1991, ASTM A269, ASTM A270, ASTM A312
Material	316L Stainless Steel
Material Certification	BS EN 10204/DIN 50049 3.1 for all wetted parts
Finish	Welds ground ID & OD, Polished 0.8Ra (0.4 Ra available)
Tolerance	+/- 1.0mm
Plain-Ended Options	Tees, 90°, 45° & 180° bends, hositails, concentric & eccentric reducers, Y pieces, Crosses
Notes	Dimensions are provided in good faith. Seals must be chosen for required operating medium and temperature
GENERAL CAPABILITIES	
Design and System Fabrication, Hygienic Process Plant, Project Management, In-house Manual and Orbital Welding, Machining, Fabrication and Polishing, Component Customisation	
Full materials certification, weld maps, logs, welder qualifications and weld procedures, pickling, passivation and ferroxyl certification.	

D8083-V02 / ECN 730

## CUSTOMISED STAINLESS STEEL SYSTEMS, FABRICATIONS AND COMPONENTS

### Axium Process Ltd

Hendy Industrial Estate, Hendy, Swansea, UK SA4 0XP

Tel: +44 (0) 1792 883882

Fax: +44 (0) 1792 886049

Email: [info@axiumprocess.com](mailto:info@axiumprocess.com)

Web: [www.axiumprocess.com](http://www.axiumprocess.com)



All data is provided in good faith and is subject to change

FS 83081