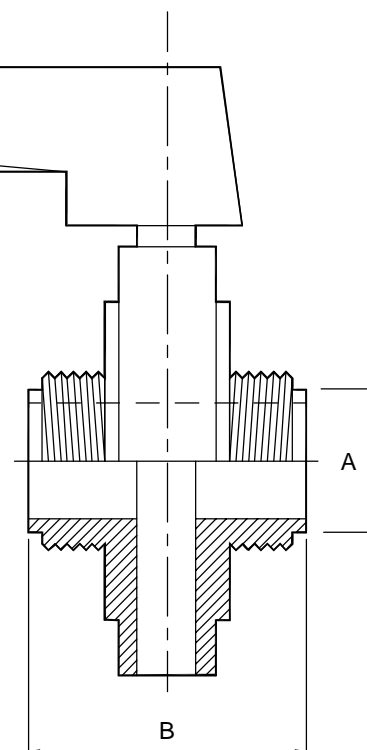


2127

## IDF butterfly valve - 316L BS4825

Nom size	A	B	Max Op Pressure (bar) @ 20°C	Stock No
1"	25.4	68.0	10	2127-6026
1½"	38.1	76.0	10	2127-6038
2"	50.8	80.0	10	2127-6051
2½"	63.5	80.0	10	2127-6064
3"	76.2	82.0	10	2127-6076



### Technical Data:

- Material: 316L Stainless Steel
- Finish: 0.8RA or better
- Pressure/Temperature: See above (temp according to seal material)
- Associated standards:
- Applications : Designed for manual or automatic simple on/off duties
- Tolerance: +/- 0.5mm
- Seals: EPDM, Silicone, Viton®, Nitrile, & Solid PTFE

- We also stock a comprehensive range of hygienic stainless steel fittings and components including tank manways, sightglasses, sprayballs, filters, as well as clamp, RJT, IDF, DIN, SMS, BSP, Flange, Plain-ended tube and pipe fittings
- Components can be fabricated to customer specification
- Fabrication capabilities include frameworks, skid mounted systems, manifolds, jacketed assemblies, adaptors, flowplates and spool pieces.
- In-house services include machining, welding, fabrication, polishing.

2127-V01

FORM No:FM002-V02

### NOTES

- Dimensions are provided in good faith but maybe subject to change
- Seals must be chosen for required operating medium & temperature

Axiom Process Ltd  
Hendy Industrial Estate  
Hendy, Swansea  
SA4 0XP UK

(T) +44 (0)1792 883 882  
 (F) +44 (0)1792 886 049  
 (E) [info@axiumprocess.com](mailto:info@axiumprocess.com)  
 (W) [www.axiumprocess.com](http://www.axiumprocess.com)