

SIGHTGLASSES



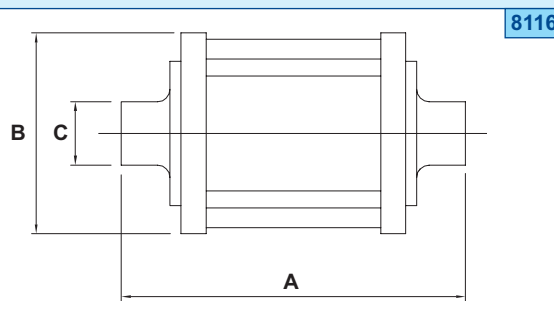
Designed for safe product visualisation

- 316L stainless steel/borosilicate glass contact parts
- Working temperature upto 200°C (depending on seal material used)
- Silicon seal as standard – EPDM & *Viton® options available
- Plain-ended or clamp options as standard – RJT, IDF, DIN, SMS options available
- All plastic or plastic/stainless steel design available for powder handling applications

We specialise in customised fabrication providing engineering solutions to customer specification

| Nom Size | A | B | C |
|----------|-------|-------|------|
| 1" | 165.0 | 55.0 | 1" |
| 1 ½" | 165.0 | 70.0 | 1 ½" |
| 2" | 165.0 | 85.0 | 2" |
| 2 ½" | 165.0 | 95.0 | 2 ½" |
| 3" | 165.0 | 105.0 | 3" |
| 4" | 165.0 | 140.0 | 4" |

½" or ¾" clamp ended option available



We also stock clamp window type sightglasses which are designed for food processing and sterile applications

(*Viton® is a registered trademark of DuPont Dow Elastomers)

PIPE AND SADDLE CLIPS

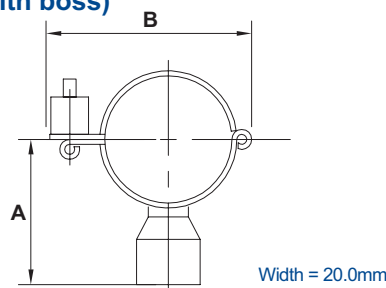


Secure vertical and horizontal support for tubular pipe work and process service lines

Plastic inserts (blue) assist with vibration damping

Hinged pipeclip - 304 (with boss)

0097

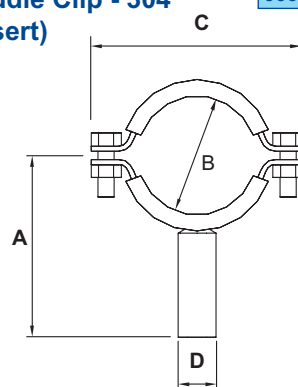


| Nom Size | A | B |
|----------|------|-----|
| ½" | 38.0 | 58 |
| ¾" | 42.0 | 62 |
| 1" | 45.0 | 66 |
| 1 ½" | 50.0 | 76 |
| 2" | 60.0 | 88 |
| 2 ½" | 64.0 | 102 |
| 3" | 70.0 | 116 |
| 4" | 80.0 | 145 |

1/2 inch BSPF support boss as standard-options include M10, no boss or weld stem

Saddle Clip - 304 (insert)

0099



| Nom Size | A | B | C | D |
|----------|----|-------|-------|----|
| ½" | 90 | 12.7 | 50.0 | 19 |
| ¾" | 90 | 19.05 | 55.0 | 19 |
| 1" | 90 | 25.4 | 61.0 | 19 |
| 1 ½" | 90 | 38.0 | 74.0 | 19 |
| 2" | 90 | 50.7 | 71.0 | 19 |
| 2 ½" | 90 | 63.5 | 83.5 | 19 |
| 3" | 90 | 76.2 | 96.0 | 19 |
| 4" | 90 | 101.6 | 121.5 | 19 |
| 5" | 90 | 127.0 | 147.0 | 19 |
| 6" | 90 | 152.4 | 172.0 | 19 |

1/2 inch tubular weld stem support

All data is provided in good faith and is subject to change. If dimensions are critical please confirm before ordering.

Axium Process specialises in customised fabrication of stainless steel components and systems

Tel: +44 (0)1792 883882 Web: www.axiumprocess.com Fax: +44 (0)1792 886049