

# RJT STAINLESS STEEL FITTINGS

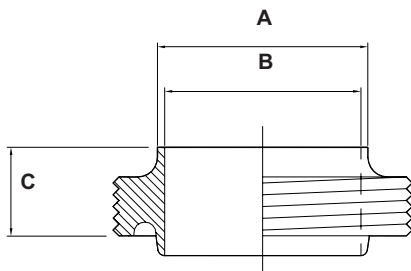


RJT fittings (Ring Joint Type) are used in many of the hygienic industries and are a popular fitting for frequently dismantled sections of pipework.

- Associated Standard BS4825 : Part 5 : 1991
- Material traceability to BS EN 10204

**We specialise in customised fabrication providing engineering solutions to customer specification**

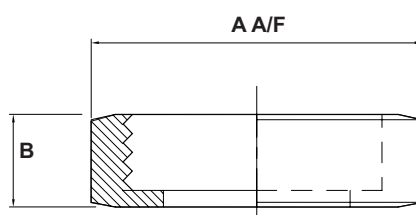
RJT malepart - 316 1001



Nom Size	A	B	C
1"	25.65	22.2	21.5
1 1/2"	38.35	34.9	21.5
2"	51.05	47.6	21.5
2 1/2"	63.75	60.3	21.5
3"	76.45	73.0	21.5
4"	101.85	97.6	21.5

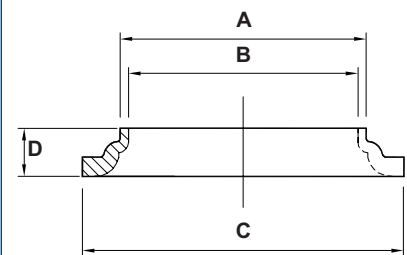
Standard Finish: 0.8Ra ID

RJT nut - 304 1002



Nom Size	A A/F	B
1"	50.8	22.2
1 1/2"	65.0	22.2
2"	79.4	22.2
2 1/2"	92.1	22.2
3"	104.8	22.2
4"	130.2	22.2

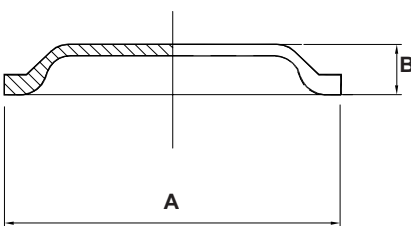
RJT weld liner pressed - 316 1003  
(machined liners also available)



Nom Size	A	B	C	D
1"	25.65	22.2	41.0	11.0
1 1/2"	38.35	34.9	54.0	11.0
2"	51.05	47.6	67.0	12.0
2 1/2"	63.75	60.3	79.0	12.0
3"	76.45	73.0	92.0	12.0
4"	101.85	97.6	118.0	14.0

Standard Finish: 0.8Ra ID

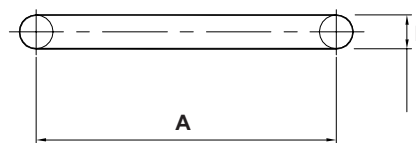
RJT pressed blank - 316 1018



Nom Size	A	B
1"	41.0	8.0
1 1/2"	54.0	8.0
2"	67.0	9.0
2 1/2"	79.0	9.0
3"	92.0	9.0
4"	118.0	9.0

Standard Finish: 0.8Ra ID

RJT seal - Nitrile 1043



Nom Size	A	B
1"	33.0	6.6
1 1/2"	46.0	6.6
2"	58.7	6.6
2 1/2"	71.4	6.6
3"	84.1	6.6
4"	109.5	6.6

EPDM, Silicone, Solid PTFE, \*Viton® options available



- Designed to operate up to 10 bar
- SRJT (Sanitary Ring Joint Type) fittings - 5" and 6" sizes available
- Blank, nut and chain also available

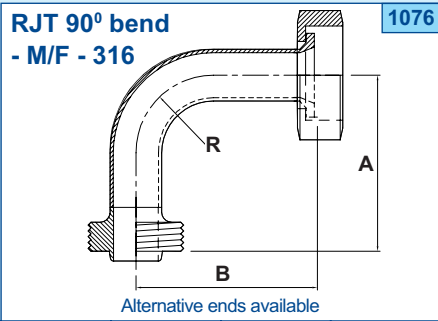
Our comprehensive range of hygienic stainless steel fittings and components also includes filters, sightglasses, sample, butterfly, ball, pressure relief and non return valves, tank manways and sprayballs

(\*Viton® is a registered trademark of DuPont Dow Elastomers)

**All data is provided in good faith and is subject to change. If dimensions are critical please confirm before ordering.**

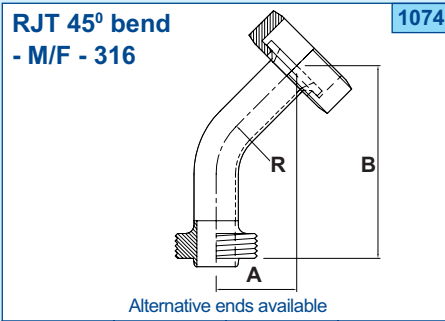
Axiom Process specialises in customised fabrication of stainless steel components and systems

Tel: +44 (0)1792 883882 Web: [www.axiomprocess.com](http://www.axiomprocess.com) Fax: +44 (0)1792 886049



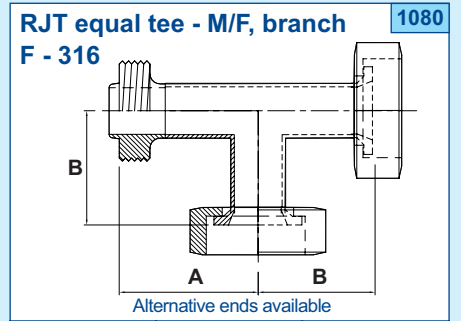
Nom Size	A	B	R
1"	77.7	86.5	38.1
1 1/2"	97.7	106.5	57.2
2"	122.7	131.5	76.2
2 1/2"	147.7	156.5	95.3
3"	167.7	176.5	114.3
4"	207.7	216.5	152.4

Polished 0.8 Ra OD (0.4 Ra option available) Descaled ID



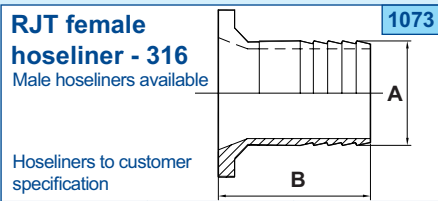
Nom Size	A	B	R
1"	29.0	72.2	38.1
1 1/2"	37.0	91.0	57.2
2"	50.0	121.5	76.2
2 1/2"	62.3	151.5	95.3
3"	75.0	181.3	114.3
4"	96.3	231.4	152.4

Polished 0.8 Ra OD (0.4 Ra option available) Descaled ID



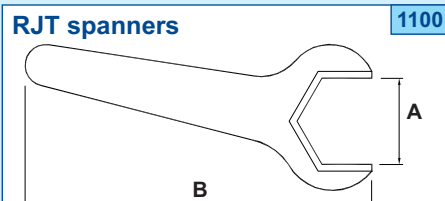
Nom Size	A	B
1"	65.0	56.2
1 1/2"	85.0	76.2
2"	110.0	101.2
2 1/2"	135.0	126.2
3"	155.0	146.2
4"	195.0	186.2

Polished 0.8 Ra OD (0.4 Ra option available) Descaled ID



Nom Size	A	B
1"	25.4	61
1 1/2"	38.1	61
2"	50.8	92
2 1/2"	63.5	92
3"	76.2	112
4"	101.2	114

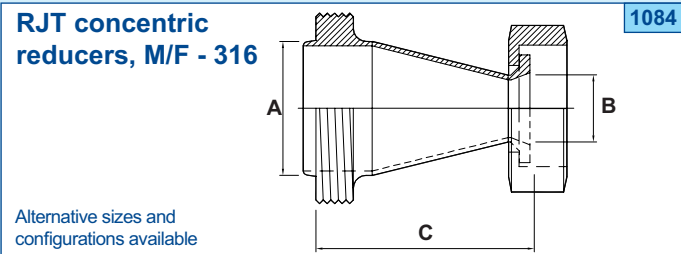
Polished 0.8 Ra OD (0.4 Ra option available) Descaled ID



Nom Size	A	B
1"	52	240
1 1/2"	67	285
2"	82	305
2 1/2"	94	325
3"	107	440
4"	130	450

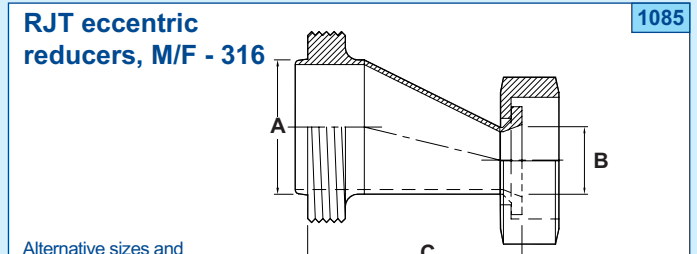
**FABRICATED COMPONENTS TO CUSTOMER SPECIFICATION**

- Adaptors, manifolds, Y pieces
  - Butterfly, ball and sample valves
  - Filters and sightglasses
  - Jacketed pipework
  - Tank and non standard ferrules
  - Special bends, tees, hoseliners
  - Tank manways
  - Sprayballs and sprayball assemblies
  - Flowplates
- 



Nom Size Fitting				
Larger	Smaller	A	B	C
1 1/2"	1"	38.1	25.4	63.2
2"	1"	50.8	25.4	83.2
2"	1 1/2"	50.8	38.1	65.2
2 1/2"	1"	63.5	25.4	110.2
2 1/2"	1 1/2"	63.5	38.1	82.2
2 1/2"	2"	63.5	50.8	72.2
3"	1"	76.2	25.4	134.2
3"	1 1/2"	76.2	38.1	108.2
3"	2"	76.2	50.8	84.2
3"	2 1/2"	76.2	63.5	74.2
4"	1"	101.6	25.4	86.2
4"	1 1/2"	101.6	38.1	162.2
4"	2"	101.6	50.8	134.2
4"	2 1/2"	101.6	63.5	109.2
4"	3"	101.6	76.2	89.2

Polished 0.8 Ra OD (0.4 Ra option available) Descaled ID



Nom Size Fitting				
Larger	Smaller	A	B	C
1 1/2"	1"	38.1	25.4	61.2
2"	1"	50.4	25.4	81.2
2"	1 1/2"	50.4	38.1	72.2
2 1/2"	1"	63.5	25.4	102.2
2 1/2"	1 1/2"	63.5	38.1	108.2
2 1/2"	2"	63.5	50.4	79.2
3"	1"	76.2	25.4	129.2
3"	1 1/2"	76.2	38.1	102.2
3"	2"	76.2	50.4	114.2
3"	2 1/2"	76.2	63.5	74.2
4"	1 1/2"	101.6	38.1	150.2
4"	2"	101.6	50.4	130.2
4"	2 1/2"	101.6	63.5	103.2
4"	3"	101.6	76.2	109.2

Polished 0.8 Ra OD (0.4 Ra option available) Descaled ID

**All data is provided in good faith and is subject to change. If dimensions are critical please confirm before ordering.**

Axiom Process specialises in customised fabrication of stainless steel components and systems

Tel: +44 (0)1792 883882 Web: www.axiomprocess.com Fax: +44 (0)1792 886049