

# BSP FITTINGS



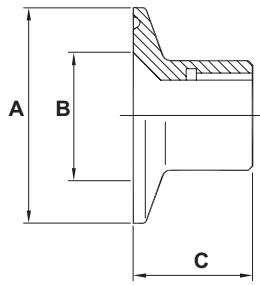
**BSP (British Standard Pipe) fittings are generally available from 1/8" up to 4" sizes (dimensions in accordance with BS EN 10241) and are manufactured in 316 stainless steel. Adaptors are available from male or female BSP to clamp, flange, IDF, RJT, DIN or SMS.**



**We specialise in customised fabrication providing engineering solutions to customer specification**

## Female Adapter - 316 5196

(BSP to clamp)



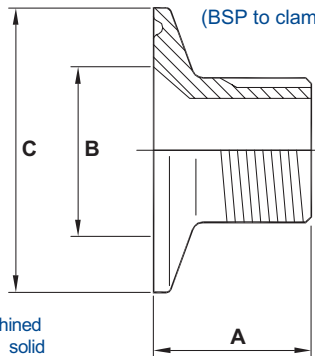
Machined from solid

| Nom Size BSP | A    | B    | C    |
|--------------|------|------|------|
| 1/8"         | 25.4 | 10.0 | 25.0 |
| 1/4"         | 25.4 | 10.0 | 25.0 |
| 3/8"         | 25.4 | 10.0 | 25.0 |
| 1/2"         | 25.4 | 10.0 | 25.0 |
| 3/4"         | 50.8 | 35.0 | 25.0 |
| 1"           | 50.8 | 35.0 | 25.0 |
| 1 1/4"       | 50.8 | 35.0 | 25.0 |
| 1 1/2"       | 50.8 | 35.0 | 25.0 |
| 2"           | 50.8 | 35.0 | 25.0 |
| 2 1/2"       | 50.8 | 35.0 | 25.0 |
| 3"           | 50.8 | 35.0 | 25.0 |
| 3 1/2"       | 50.8 | 35.0 | 25.0 |
| 4"           | 50.8 | 35.0 | 25.0 |

Standard Finish: Polished to 0.8 ID (0.4 Ra Option available)

## Male Adapter - 316 5197

(BSP to clamp)



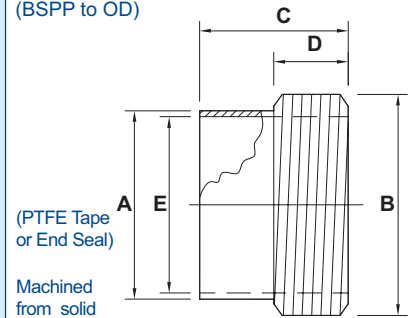
Machined from solid

| Nom Size BSP | A    | B    | C    |
|--------------|------|------|------|
| 1/4"         | 25.4 | 10.0 | 30.0 |
| 3/8"         | 25.4 | 10.0 | 30.0 |
| 1/2"         | 25.4 | 16.0 | 30.0 |
| 3/8"         | 50.8 | 22.0 | 32.0 |
| 1/2"         | 50.8 | 22.0 | 36.0 |
| 3/4"         | 50.8 | 22.0 | 35.0 |
| 1"           | 50.8 | 22.0 | 36.0 |

Standard Finish: Polished to 0.8 ID (0.4 Ra Option available)

## Plain-ended Adapter - 316 6095

(BSP to OD)

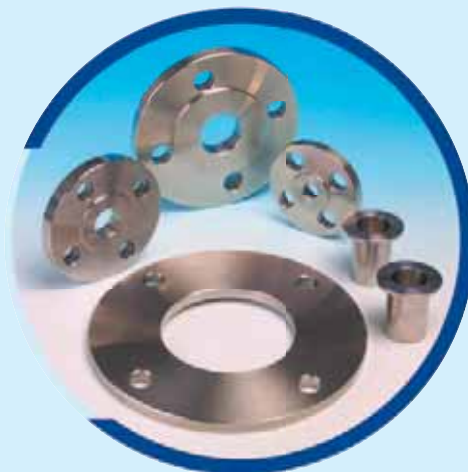


(PTFE Tape or End Seal)

Machined from solid

| Nom Size | A     | B     | C    | D    | E     |
|----------|-------|-------|------|------|-------|
| 1/2"     | 12.7  | 20.9  | 30.0 | 15.0 | 9.5   |
| 3/4"     | 19.0  | 26.4  | 30.0 | 15.0 | 15.8  |
| 1"       | 25.4  | 33.2  | 30.0 | 15.0 | 22.2  |
| 1 1/4"   | 31.7  | 41.9  | 40.0 | 20.0 | 28.5  |
| 1 1/2"   | 38.1  | 47.8  | 40.0 | 20.0 | 34.9  |
| 2"       | 50.8  | 59.6  | 40.0 | 20.0 | 47.6  |
| 2 1/2"   | 63.5  | 75.1  | 50.0 | 25.0 | 60.3  |
| 3"       | 76.2  | 87.8  | 50.0 | 25.0 | 73.0  |
| 4"       | 101.6 | 113.0 | -    | -    | 98.4  |
| 5"       | 129.0 | 138.4 | -    | -    | 125.0 |
| 6"       | 154.0 | 163.8 | -    | -    | 150.0 |

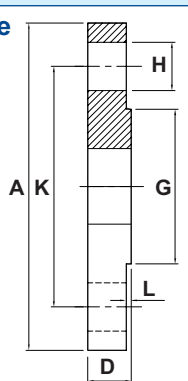
Standard Finish: Polished to 1.0Ra



# STAINLESS STEEL FLANGES

A flange can be generally classified as a plate, forging or cast ring that is used to join sections of tube, pipe or items of plant such as a pump or valve.

## Flange ANSI 150 316L



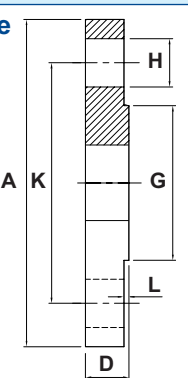
7007

| Nom Size | A     | D    | G     | H    | K     | L    |
|----------|-------|------|-------|------|-------|------|
| 1/2"     | 88.9  | 11.1 | 34.9  | 15.9 | 60.3  | 1.63 |
| 3/4"     | 98.4  | 12.7 | 42.9  | 15.9 | 69.8  | 1.63 |
| 1"       | 108.0 | 14.3 | 50.8  | 15.9 | 79.4  | 1.63 |
| 1 1/2"   | 127.0 | 17.5 | 73.0  | 15.9 | 98.4  | 1.63 |
| 2"       | 152.4 | 19.0 | 92.1  | 19.0 | 120.6 | 1.63 |
| 2 1/2"   | 177.8 | 22.2 | 104.8 | 19.0 | 139.7 | 1.63 |
| 3"       | 190.5 | 23.8 | 127.0 | 19.0 | 152.4 | 1.63 |
| 3 1/2"   | 215.9 | 23.8 | 139.7 | 19.0 | 177.8 | 1.63 |
| 4"       | 228.6 | 23.8 | 157.2 | 19.0 | 190.5 | 1.63 |

Standard Finish: 1.6-3.2 Ra

### TABLES D&E OPTIONS ALSO AVAILABLE

## Flange PN16 316L



7010

| Nom Size | A     | D    | G     | H    | K     | L   |
|----------|-------|------|-------|------|-------|-----|
| 1"       | 115.0 | 16.0 | 68.0  | 14.0 | 85.0  | 2.0 |
| 1 1/2"   | 150.0 | 18.0 | 88.0  | 18.0 | 110.0 | 3.0 |
| 2"       | 165.0 | 20.0 | 102.0 | 18.0 | 125.0 | 3.0 |
| 2 1/2"   | 185.0 | 20.0 | 122.0 | 18.0 | 145.0 | 3.0 |
| 3"       | 200.0 | 20.0 | 138.0 | 18.0 | 160.0 | 3.0 |
| 4"       | 220.0 | 22.0 | 158.0 | 18.0 | 180.0 | 3.0 |
| 5"       | 250.0 | 22.0 | 188.0 | 18.0 | 210.0 | 3.0 |
| 6"       | 285.0 | 24.0 | 212.0 | 22.0 | 240.0 | 3.0 |

Standard Finish: 1.6-3.2 Ra

All Flanges bored to suit tube or pipe as required

**All data is provided in good faith and is subject to change. If dimensions are critical please confirm before ordering.**

Axiom Process specialises in customised fabrication of stainless steel components and systems

Tel: +44 (0)1792 883882 Web: www.axiumprocess.com Fax: +44 (0)1792 886049