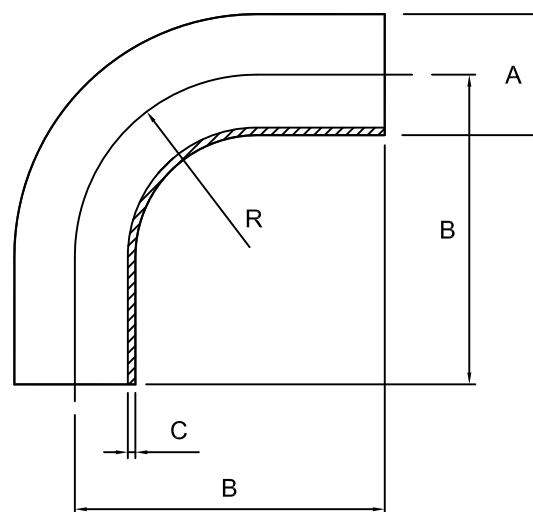


Plain-ended 90° bend, 2D- 316L

Nom size	A	B	C	R	Max Op Pressure (bar) @ 20°C	Stock No
1/2"	12.7	60.0	1.65	25.4	10	8259-6013
3/4"	19.1	80.0	1.65	38.1	10	8259-6019



Technical Data:

- Material: 316L Stainless Steel
- Finish: 0.8RA or better
- Pressure: See above
- Associated standards: BS 4825 : Part 2 : 1991, ASTM A269, ASTM A270, ASTM A312

- We stock a comprehensive range of plain-ended fittings including tees, reducers, "Y" pieces, hositails and equal cross pieces
- Components can be fabricated to customer specification
- Fabrication capabilities include frameworks, skid mounted systems, manifolds, jacketed assemblies, adaptors, flowplates and spool pieces.
- In-house services include machining, welding, fabrication, polishing.

D8259V01

NOTES

- Dimensions are provided in good faith but maybe subject to change
- Seals must be chosen for required operating medium & temperature