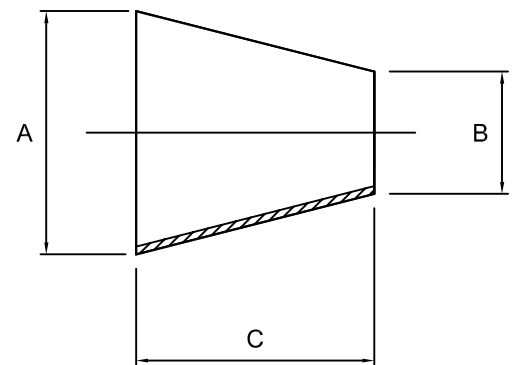


Plain-ended concentric reducers - 316L

Nom size fitting		A	B	C	Max Op Pressure (bar) @ 20°C	Stock No
Larger	Smaller					
1"	1/2"	25.4	12.7	18.0	10	8084-6026-013
1"	3/4"	25.4	19.1	20.0	10	8084-6026-019
1 1/2"	1/2"	38.1	12.7	44.0	10	8084-6038-013
1 1/2"	3/4"	38.1	19.1	54.0	10	8084-6038-019
1 1/2"	1"	38.1	25.4	28.0	10	8084-6038-026
2"	1/2"	50.8	12.7	73.0	10	8084-6051-013
2"	3/4"	50.8	19.1	60.0	10	8084-6051-019
2"	1"	50.8	25.4	54.0	10	8084-6051-026
2"	1 1/2"	50.8	38.1	38.0	10	8084-6051-038
2 1/2"	1"	63.5	25.4	76.0	10	8084-6064-026
2 1/2"	1 1/2"	63.5	38.1	75.0	10	8084-6064-038
2 1/2"	2"	63.5	50.8	39.0	10	8084-6064-051
3"	1"	76.2	25.4	100.0	10	8084-6076-026
3"	1 1/2"	76.2	38.1	85.0	10	8084-6076-038
3"	2"	76.2	50.8	54.0	10	8084-6076-051
3"	2 1/2"	76.2	63.5	39.0	10	8084-6076-064
4"	1"	101.6	25.4	159.0	10	8084-6102-026
4"	1 1/2"	101.6	38.1	128.0	10	8084-6102-038
4"	2"	101.6	50.8	110.0	10	8084-6102-051
4"	2 1/2"	101.6	63.5	78.0	10	8084-6102-064
4"	3"	101.6	76.2	55.0	10	8084-6102-076



Technical Data:

- Material: 316L Stainless Steel
- Finish: 0.8RA or better
- Pressure: See above
- Associated standards: BS 4825 : Part 2 : 1991, ASTM A269, ASTM A270, ASTM A312
- Tolerance: +/- 1.0mm

- We stock a comprehensive range of plain-ended fittings including bends, tees, "Y" pieces, hosetails and equal cross pieces
- Components can be fabricated to customer specification
- Fabrication capabilities include frameworks, skid mounted systems, manifolds, jacketed assemblies, adaptors, flowplates and spool pieces.
- In-house services include machining, welding, fabrication, polishing.

D8084-V03/ECN917

NOTES

- Dimensions are provided in good faith but maybe subject to change
- Seals must be chosen for required operating medium & temperature

(T) +44 (0)1792 883 882
 (F) +44 (0)1792 886 049
 (E) info@axiumprocess.com
 (W) www.axiumprocess.com