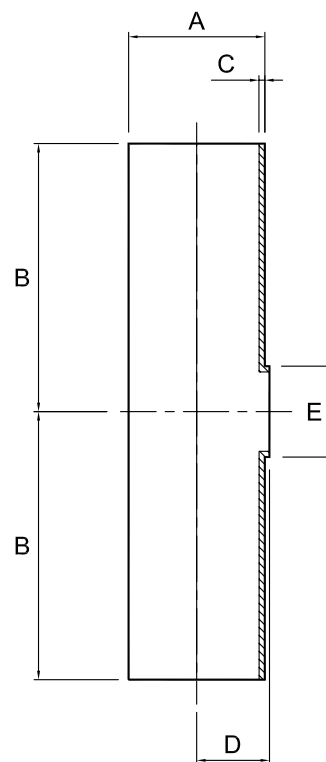


Plain-ended reducing tee - 316L

Nom size fitting	A	B	C	D	E	Max Op Pressure (bar) @ 20°C	Stock No	
Body	Branch							
1 1/2"	1"	38.1	64.0	1.6	22.0	25.4	10	8081-6038-026
2"	1"	50.8	89.0	1.6	29.0	25.4	10	8081-6051-026
2"	1 1/2"	50.8	89.0	1.6	29.0	38.1	10	8081-6051-038
2 1/2"	1"	63.5	114.0	1.6	35.0	25.4	10	8081-6064-026
2 1/2"	1 1/2"	63.5	114.0	1.6	35.0	38.1	10	8081-6064-038
2 1/2"	2"	63.5	114.0	1.6	35.0	50.8	10	8081-6064-051
3"	1"	76.1	134.0	1.6	35.0	25.4	10	8081-6076-026
3"	1 1/2"	76.1	134.0	1.6	35.0	38.1	10	8081-6076-038
3"	2"	76.1	134.0	1.6	35.0	50.8	10	8081-6076-051
3"	2 1/2"	76.1	134.0	1.6	35.0	63.5	10	8081-6076-064
4"	1"	101.6	174.0	2.0	55.0	25.4	10	8081-6102-026
4"	1 1/2"	101.6	174.0	2.0	55.0	38.1	10	8081-6102-038
4"	2"	101.6	174.0	2.0	55.0	50.8	10	8081-6102-051
4"	2 1/2"	101.6	174.0	2.0	55.0	63.5	10	8081-6102-064
4"	3"	101.6	174.0	2.0	55.0	76.1	10	8081-6102-076



Technical Data:

- Material: 316L Stainless Steel
- Finish: 0.8RA Polished OD/Descaled ID
- Pressure: See above
- Associated standards: BS 4825 : Part 2 : 1991, ASTM A269, ASTM A270, ASTM A312

- We stock a comprehensive range of plain-ended fittings including bends, reducers, "Y" pieces, hositails and equal cross pieces
- Components can be fabricated to customer specification
- Fabrication capabilities include frameworks, skid mounted systems, manifolds, jacketed assemblies, adaptors, flowplates and spool pieces.
- In-house services include machining, welding, fabrication, polishing.

D8081-V03/ECN203

NOTES

- Dimensions are provided in good faith but maybe subject to change
- Seals must be chosen for required operating medium & temperature