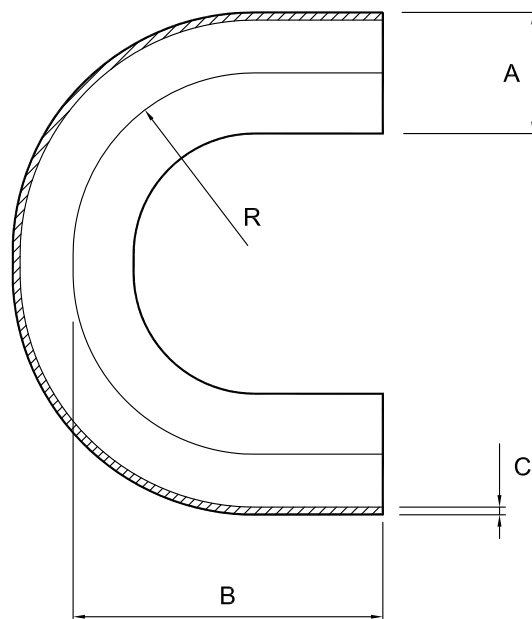


180° bend, long - 316L

Nom size	A	B	C	R	Max Op Pressure (bar) @ 20°C	Stock No
1"	25.4	155.0	1.6	40.0	10	8078-6026
1 1/2"	38.1	232.0	1.6	59.0	10	8078-6038
2"	50.8	308.0	1.6	78.5	10	8078-6051
2 1/2"	63.5	385.0	1.6	97.5	10	8078-6064
3"	76.1	462.0	1.6	117.5	10	8078-6076
4"	101.6	620.0	2.0	155.0	10	8078-6102



Technical Data:

- Material: 316L Stainless Steel
- Finish: 0.8RA Polished OD/Descaled ID
- Pressure: See above
- Associated standards: BS 4825 : Part 2 : 1991, ASTM A269, ASTM A270, ASTM A312
- Tolerance: +/- 0.5mm

- We stock a comprehensive range of plain-ended fittings including tees, reducers, "Y" pieces, hosetails and equal cross pieces
- Components can be fabricated to customer specification
- Fabrication capabilities include frameworks, skid mounted systems, manifolds, jacketed assemblies, adaptors, flowplates and spool pieces.
- In-house services include machining, welding, fabrication, polishing.

D8078-V03/ECN290

NOTES

- Dimensions are provided in good faith but maybe subject to change
- Seals must be chosen for required operating medium & temperature

(T) +44 (0)1792 883 882  
 (F) +44 (0)1792 886 049  
 (E) info@axiumprocess.com  
 (W) www.axiumprocess.com