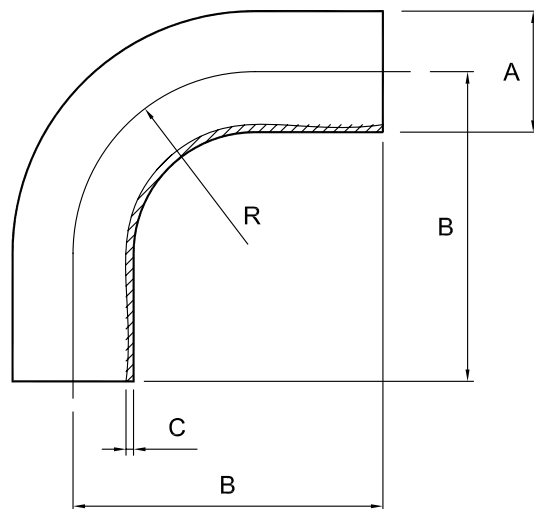


Plain-ended 90° bend, long - 316L

Nom size	A	B	C	R	Max Op Pressure (bar) @ 20°C	Stock No
1/2"	12.7	60.0	1.65	38.1	10	8076-6013
3/4"	19.1	80.0	1.65	57.0	10	8076-6019
1"	25.4	65.0	1.65	38.1	10	8076-6026
1 1/2"	38.1	85.0	1.65	57.2	10	8076-6038
2"	50.8	110.0	1.65	76.2	10	8076-6051
2 1/2"	63.5	135.0	1.65	95.3	10	8076-6064
3"	76.2	155.0	1.65	114.3	10	8076-6076
4"	101.6	195.0	2.11	152.4	10	8076-6102



Technical Data:

- Material: 316L Stainless Steel
- Finish: 0.8RA or better
- Pressure: See above
- Associated standards: BS 4825 : Part 2 : 1991, ASTM A269, ASTM A270, ASTM A312

- We stock a comprehensive range of plain-ended fittings including tees, reducers, "Y" pieces, hosetails and equal cross pieces
- Components can be fabricated to customer specification
- Fabrication capabilities include frameworks, skid mounted systems, manifolds, jacketed assemblies, adaptors, flowplates and spool pieces.
- In-house services include machining, welding, fabrication, polishing.

D8076-V03/ECN203

NOTES

- Dimensions are provided in good faith but maybe subject to change
- Seals must be chosen for required operating medium & temperature

(T) +44 (0)1792 883 882
 (F) +44 (0)1792 886 049
 (E) info@axiumprocess.com
 (W) www.axiumprocess.com