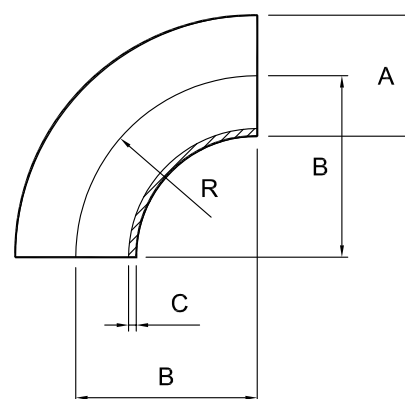


Plain-ended 90° bend, short - 316L

Nom size	A	B	C	R	Max Op Pressure (bar) @ 20°C	Stock No
1"	25.4	44.0	1.65	38.1	10	8075-6026
1½"	38.1	64.0	1.65	57.2	10	8075-6038
2"	50.8	89.0	1.65	76.2	10	8075-6051
2½"	63.5	114.0	1.65	95.3	10	8075-6064
3"	76.1	134.0	1.65	114.3	10	8075-6076
4"	101.6	174.0	2.11	152.4	10	8075-6102



Technical Data:

- Material: 316L Stainless Steel
- Finish: 0.8RA or better
- Pressure: See above
- Associated standards: BS 4825 : Part 2 : 1991, ASTM A269, ASTM A270, ASTM A312
- Tolerance: +/- 0.5mm

- We stock a comprehensive range of plain-ended fittings including tees, reducers, "Y" pieces, hositails and equal cross pieces
- Components can be fabricated to customer specification
- Fabrication capabilities include frameworks, skid mounted systems, manifolds, jacketed assemblies, adaptors, flowplates and spool pieces.
- In-house services include machining, welding, fabrication, polishing.

D8075-V02/ECN152

NOTES

- Dimensions are provided in good faith but maybe subject to change
- Seals must be chosen for required operating medium & temperature