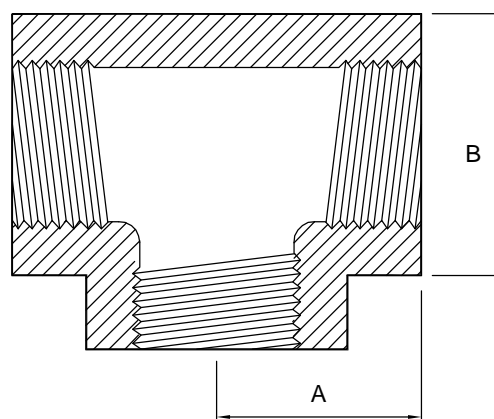


6110

BSP female equal tee - 316

| Nom size | A | B | Max Op @ 150°C Pressure (bar) | Stock No |
|----------|-------|-------|----------------------------------|-------------|
| 1/8" | 17.4 | 19.0 | 10 | 6110-5003 |
| 1/4" | 17.4 | 19.0 | 10 | 6110-5006 |
| 3/8" | 20.6 | 23.8 | 10 | 6110-5009 |
| 1/2" | 27.0 | 28.5 | 10 | 6110-5013 |
| 3/4" | 33.3 | 34.9 | 10 | 6110-5019 |
| 1" | 39.6 | 39.6 | 10 | 6110-5026 |
| 1 1/4" | 46.0 | 50.8 | 10 | 6110-5031 |
| 1 1/2" | 52.3 | 57.1 | 10 | 6110-5038 |
| 2" | 65.0 | 69.8 | 10 | 6110-5051 |
| 2 1/2" | 74.6 | 88.9 | 10 | 6110-5064 |
| 3" | 87.3 | 101.6 | 10 | 6110-5076 |
| 4" | 112.7 | 127.0 | 10 | 6110-5102 |



Technical Data:

- Material: 316 Stainless Steel
- Finish: Descaled
- Pressure/Temperature: See above
- Associated standards: BS 1740, BS1387
- Applications : Non-hygienic
- Tolerance: +/- 0.5mm
- Seals: PTFE Tape

- We stock a comprehensive range of BSP fittings including unions, ferrules, bends, tees, reducers, hoseliners and adaptors
- Components can be fabricated to customer specification
- Fabrication capabilities include frameworks, skid mounted systems, manifolds, jacketed assemblies, adaptors, flowplates and spool pieces.
- In-house services include machining, welding, fabrication, polishing.





D6110 – V01

NOTES

FORM No:FM002-V02

Axiom Process Ltd
Hendy Industrial Estate
Hendy, Swansea
SA4 0XP UK

- Dimensions are provided in good faith but maybe subject to change
- Seals must be chosen for required operating medium & temperature

 +44 (0)1792 883 882
 +44 (0)1792 886 049
 info@axiumprocess.com
 www.axiumprocess.com