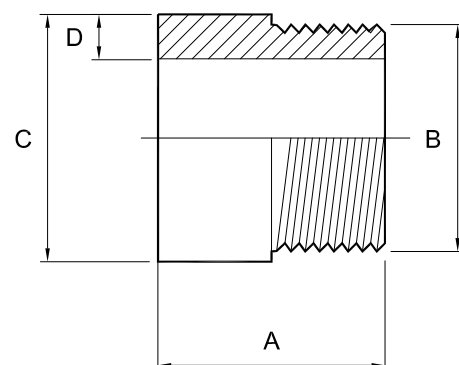


## BSPT weld nipple - 316

Nom size	A	B BSPT	C	D	Max Op @ 150°C Pressure (bar)	Stock No
1/8"	30.0	1/8"	10.29	1.73	10	6102-5003
1/4"	30.0	1/4"	13.72	2.24	10	6102-5006
3/8"	30.0	3/8"	17.15	2.30	10	6102-5009
1/2"	35.0	1/2"	21.34	2.77	10	6102-5013
3/4"	40.0	3/4"	26.67	2.87	10	6102-5019
1"	40.0	1"	33.40	33.40	10	6102-5026
1 1/4"	50.0	1 1/4"	42.16	3.56	10	6102-5031
1 1/2"	50.0	1 1/2"	48.26	3.68	10	6102-5038
2"	50.0	2"	60.33	3.91	10	6102-5051
2 1/2"	60.0	2 1/2"	73.03	5.16	10	6102-5064
3"	70.0	3"	88.90	5.49	10	6102-5076
4"	80.0	4"	114.30	6.02	10	6102-5102



Based on schedule 40 fittings

### Technical Data:

- Material: 316 Stainless Steel
- Finish: Descaled
- Pressure/Temperature: See above
- Associated standards: BS1740, BS1387
- Applications : Non-hygienic
- Tolerance: +/- 0.5mm
- Seals: PTFE Tape

- We stock a comprehensive range of BSP fittings including unions, ferrules, bends, tees, reducers, hoseliners and adaptors
- Components can be fabricated to customer specification
- Fabrication capabilities include frameworks, skid mounted systems, manifolds, jacketed assemblies, adaptors, flowplates and spool pieces.
- In-house services include machining, welding, fabrication, polishing.

D6102-V02 ECN839

### NOTES

- Dimensions are provided in good faith but maybe subject to change
- Seals must be chosen for required operating medium & temperature