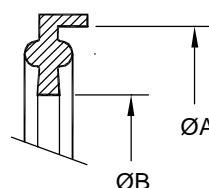


5044-02

## Clamp lipped EPDM seal imperial tube (type A) BS4825

Nom size	A	B	Max Op Pressure (bar) @ 150°C	Stock No
1"	50.5	22.8	50	5044-2026
1½"	50.5	35.5	50	5044-2038
2"	64.0	48.2	50	5044-2051
2½"	77.5	60.5	50	5044-2064
3"	91.0	73.2	50	5044-2076
3½"	106.0	84.7	50	5044-2089
4"	119.0	97.8	40	5044-2102
4½"	130.0	110.5	40	5044-2114
5"	144.4	123.2	35	5044-2127
5½"	155.0	135.9	30	5044-2140
6"	167.0	150.2	30	5044-2154
6 5/8"	183.0	163.3	30	5044-2168
8"	217.4	200.2	30	5044-2154
8 5/8"	233.5	214.1	25	5044-2168
10"	268.0	250.2	20	5044-2254
10 3/4"	286.1	266.5	20	5044-2270
12"	319.0	301.0	16	5044-2305



### Technical Data:

- Material: 316L Stainless Steel
- Finish: 0.8RA or better
- Pressure/Temperature: See above (temp according to seal material)
- Associated standards: BS 4825 : Part 3 : 1991 (1" to 4" inclusive)
- Applications : Clamp fittings are suitable for beverage, fine chemical, pharmaceutical and biotech applications, where crevice free conditions are critical.
- Tolerance: +/- 0.5mm
- Seals: EPDM, Silicone, Viton®, Nitrile, Encapsulated & Solid PTFE

- We stock a comprehensive range of clamp fittings including unions, ferrules, bends, tees, reducers, hoseliners and adaptors
- Components can be fabricated to customer specification
- Fabrication capabilities include frameworks, skid mounted systems, manifolds, jacketed assemblies, adaptors, flowplates and spool pieces.
- In-house services include machining, welding, fabrication, polishing.

5044-02-V01

### NOTES

FORM No:FM002-V02

Axiom Process Ltd  
Hendy Industrial Estate  
Hendy, Swansea  
SA4 0XP UK

- Dimensions are provided in good faith but maybe subject to change
- Seals must be chosen for required operating medium & temperature

(T) +44 (0)1792 883 882  
 (F) +44 (0)1792 886 049  
 (E) [info@axiumprocess.com](mailto:info@axiumprocess.com)  
 (W) [www.axiumprocess.com](http://www.axiumprocess.com)