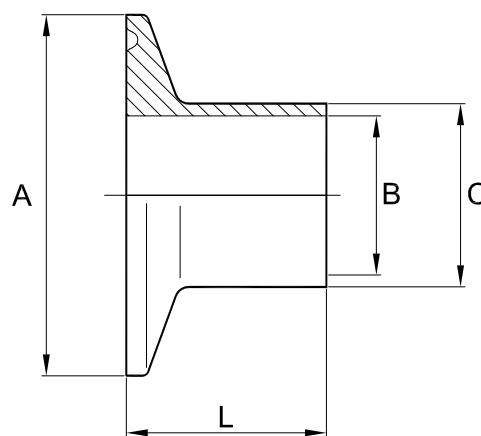


## Clamp ferrule imperial tube 316L 28mm BS4825\*

Nom size	A	B	C	L	Max Op Pressure (bar) @ 150°C	Stock No
1/2"	25.4	9.5	12.7	28.0	50	5034-6013
3/4"	25.4	15.87	19.05	28.0	50	5034-6013
1"*	50.5	22.2	25.65	28.0	50	5034-6026
1 1/2"*	50.5	34.9	38.35	28.0	50	5034-6026
2"*	64.0	47.6	51.05	28.0	50	5034-6051
2 1/2"*	77.5	60.3	63.75	28.0	50	5034-6064
3"*	91.0	73.0	76.45	28.0	40	5034-6076
4"*	119.0	97.6	101.85	28.0	35	5034-6102
4 1/2"	130.0	110.3	114.95	28.0	30	5034-6114
5"	144.4	123.0	127.0	28.0	30	5034-6127
5 1/2"	155.0	135.76	140.55	28.0	30	5034-6140
6"	167.0	150.0	154.0	28.0	30	5034-6154
6 5/8"	183.0	163.1	169.35	28.0	25	5034-6168
8"	217.4	200.0	204.0	28.0	20	5034-6204
8 5/8"	233.5	213.9	220.55	28.0	20	5034-6219
10"	268.0	250.0	254.0	28.0	16	5034-6254
10 5/8"	286.1	266.3	273.0	28.0	16	5034-6270
12"	319.0	300.8	304.8	28.0	10	5034-6305



### Technical Data:

- Material: 316L Stainless Steel
- Finish: 0.8RA or better
- Pressure/Temperature: See above (temp according to seal material)
- Associated standards: BS 4825 : Part 3 : 1991 (1" to 4" inclusive)
- Applications : Clamp fittings are suitable for beverage, fine chemical, pharmaceutical and biotech applications, where crevice free conditions are critical.
- Tolerance: +/- 0.5mm
- Seals: EPDM, Silicone, Viton®, Nitrile, Encapsulated & Solid PTFE

- We stock a comprehensive range of clamp fittings including unions, ferrules, bends, tees, reducers, hoseliners and adaptors
- Components can be fabricated to customer specification
- Fabrication capabilities include frameworks, skid mounted systems, manifolds, jacketed assemblies, adaptors, flowplates and spool pieces.
- In-house services include machining, welding, fabrication, polishing.

D5034 - V03/ECN 705

### NOTES

- Dimensions are provided in good faith but maybe subject to change
- Seals must be chosen for required operating medium & temperature

(T) +44 (0)1792 883 882  
 (F) +44 (0)1792 886 049  
 (E) info@axiumprocess.com  
 (W) www.axiumprocess.com

Axium Process Ltd  
 Hendy Industrial Estate  
 Hendy, Swansea  
 SA4 0XP UK