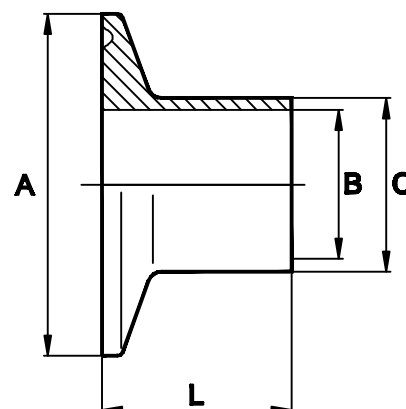


Clamp ferrule DIN tube 316L DIN32676

Nom size	A	B	C			L	Max Op Pressure (bar) @ 150°C	Stock No
			1	2	3			
DIN 10	34.0	10.0	12.0	13.0	14.0	18.0	50	5033-6010
DIN 15	34.0	16.0	18.0	19.0	20.0	18.0	50	5033-6015
DIN 20	34.0	20.0	22.0	23.0	24.0	18.0	50	5033-6020
DIN 25	50.5	26.0	28.0	29.0	30.0	21.5	50	5033-6025
DIN 32	50.5	32.0	34.0	35.0	36.0	21.5	50	5033-6032
DIN 40	50.5	38.0	40.0	41.0	42.0	21.5	50	5033-6040
DIN 50	64.0	50.0	52.0	53.0	54.0	21.5	40	5033-6050
DIN 65	91.0	66.0	70.0	-	-	28.0	35	5033-6065
DIN 80	106.0	81.0	85.0	-	-	28.0	35	5033-6080
DIN 100	119.0	100.0	104.0	-	-	28.0	35	5033-6100
DIN 125	144.4	125.0	129.0	-	-	28.0	35	5033-6125
DIN 150	183.0	150.0	154.0	-	-	28.0	35	5033-6150
DIN 200	233.5	200.0	204.0	-	-	28.0	35	5033-6200



'B' DIMENSION TO SUIT DIN11850 TUBE

Technical Data:

- | | |
|--|---|
| <ul style="list-style-type: none"> Material: 316L Stainless Steel Finish: 0.8RA or better Pressure/Temperature: See above (temp according to seal material) Associated standards: DIN 32676 1990 | <ul style="list-style-type: none"> Seals: EPDM, Nitrile, Silicone, Platinum Cured Silicone, Encapsulated & Solid PTFE, Viton®
<small>Viton® is a registered trademark of DuPont Dow Elastomers</small> |
| <ul style="list-style-type: none"> Applications : Clamp fittings are suitable for beverage, fine chemical, pharmaceutical and biotech applications, where crevice free conditions are critical. | |

- We stock a comprehensive range of clamp fittings including unions, ferrules, bends, tees, reducers, hose liners and adaptors
- Components can be fabricated to customer specification
- Fabrication capabilities include frameworks, skid mounted systems, manifolds, jacketed assemblies, adaptors, flowplates and spool pieces.
- In-house services include machining, welding, fabrication, polishing.

D5033-02-V05 ECN290

NOTES

Axium Process Ltd
Hendy Industrial Estate
Hendy, Swansea
SA4 0XP UK

- Dimensions are provided in good faith but maybe subject to change
- Seals must be chosen for required operating medium & temperature

FORM No: PMS0042
 ☎ +44 (0)1792 883 882
 ☎ +44 (0)1792 886 049
 ✉ info@axlumprocess.com
 🌐 www.axlumprocess.com