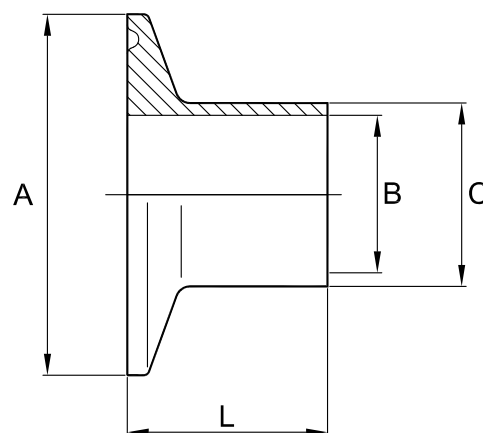


5033-01

Clamp ferrule imperial tube 316L 21.5mm BS4825*

Nom size	A	B	C	L	Max Op Pressure (bar) @ 150°C	Stock No
1/2"	25.4	9.52	12.7	21.5	50	5033-6013
3/4"	25.4	15.9	19.0	21.5	50	5033-6019
1"	50.5	22.2	25.7	21.5	50	5033-6026
1 1/2"	50.5	34.9	38.4	21.5	50	5033-6038
2"	64.0	47.6	51.0	21.5	50	5033-6051
2 1/2"	77.5	60.3	63.8	21.5	50	5033-6064
3"	91.0	73.0	76.5	21.5	40	5033-6076
4"	119.0	97.6	101.9	21.5	35	5033-6102



Technical Data:

- Material: 316L Stainless Steel
- Finish: 0.8RA or better
- Pressure/Temperature: See above (temp according to seal material)
- Associated standards: BS 4825 : Part 3 : 1991 (1" to 4" inclusive)
- Applications : Clamp fittings are suitable for beverage, fine chemical, pharmaceutical and biotech applications, where crevice free conditions are critical.
- Tolerance: +/- 0.5mm
- Seals: EPDM, Silicone, Viton®, Nitrile, Encapsulated & Solid PTFE

- We stock a comprehensive range of clamp fittings including unions, ferrules, bends, tees, reducers, hoseliners and adaptors
- Components can be fabricated to customer specification
- Fabrication capabilities include frameworks, skid mounted systems, manifolds, jacketed assemblies, adaptors, flowplates and spool pieces.
- In-house services include machining, welding, fabrication, polishing.

D5033-01-V03

NOTES

- Dimensions are provided in good faith but maybe subject to change
- Seals must be chosen for required operating medium & temperature

(T) +44 (0)1792 883 882
 (F) +44 (0)1792 886 049
 (E) info@axiumprocess.com
 (W) www.axiumprocess.com

Axium Process Ltd
 Hendy Industrial Estate
 Hendy, Swansea
 SA4 0XP UK