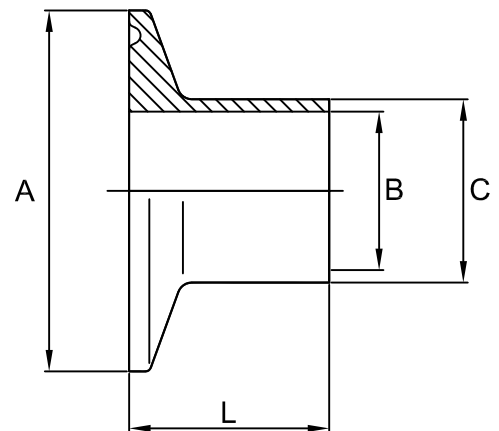


Clamp ferrule imperial tube 316L 12.7mm (machined from solid) BS4825

Nom size	A	B	C	L	Max Op Pressure (bar) @ 150°C	Stock No
1/2"	25.4	9.5	12.7	12.7	50	5032-6013
3/4"	25.4	15.9	19.0	12.7	50	5032-6013
1"	50.5	22.2	25.7	12.7	50	5032-6026
1 1/2"	50.5	34.9	38.6	12.7	50	5032-6026
2"	64.0	47.6	51.0	12.7	50	5032-6051

Options available include:

Hastelloy C-22, Forged 1-4", Ferrules for DIN tube,
Lengths of 21.5mm and 28mm,
Tank ferrules, Ferrules to customer specification



Technical Data:

- | | |
|--|---|
| <ul style="list-style-type: none"> Material: 316L Stainless Steel Finish: 0.8RA or better Pressure/Temperature: See above (temp according to seal material) Associated standards: BS 4825 : Part 3 : 1991 (1" to 4" inclusive) | <ul style="list-style-type: none"> Tolerance: +/- 0.5mm Seals: EPDM, Nitrile, Silicone, Platinum Cured Silicone, Encapsulated & Solid PTFE, Viton®
<small>Viton® is a registered trademark of DuPont Dow Elastomers</small> |
| <ul style="list-style-type: none"> Applications : Clamp fittings are suitable for beverage, fine chemical, pharmaceutical and biotech applications, where crevice free conditions are critical. | |

- We stock a comprehensive range of clamp fittings including unions, ferrules, bends, tees, reducers, hoseliners and adaptors
- Components can be fabricated to customer specification
- Fabrication capabilities include frameworks, skid mounted systems, manifolds, jacketed assemblies, adaptors, flowplates and spool pieces.
- In-house services include machining, welding, fabrication, polishing.

D5032 - V02

NOTES

- Dimensions are provided in good faith but maybe subject to change
- Seals must be chosen for required operating medium & temperature

(T) +44 (0)1792 883 882
 (F) +44 (0)1792 886 049
 (E) info@axiumprocess.com
 (W) www.axiumprocess.com