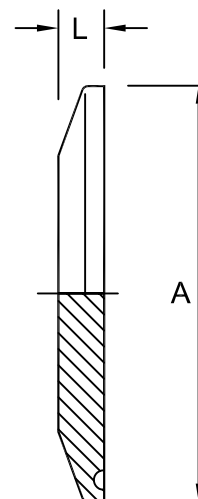


Clamp Blank imperial tube 316L BS4825*

Nom size	A	L	Max Op Pressure (bar) @ 150°C	Stock No
1/2"	25.4	5.6	50	5019-6013
3/4"	25.4	5.6	50	5019-6013
1" *	50.5	7.0	50	5019-6026
1½" *	50.5	7.0	50	5019-6026
2" *	64.0	7.0	50	5019-6051
2½" *	77.5	7.0	50	5019-6064
3" *	91.0	7.0	40	5019-6076
3½"	106.0	7.0	40	5019-6089
4" *	119.0	9.0	35	5019-6102
4½"	130.0	9.0	30	5019-6114
5"	144.4	10.0	30	5019-6127
5½"	155.0	10.0	30	5019-6140
6"	167.0	10.0	30	5019-6154
6 5/8"	183.0	10.0	25	5019-6168
8"	217.4	10.0	20	5019-6204
8 5/8"	233.5	10.0	20	5019-6219
10"	268.0	10.0	16	5019-6254
10 5/8"	286.1	10.0	16	5019-6270
12"	319.0	10.0	10	5019-6305



Metric, nominal bore options available

Technical Data:

- | | |
|--|---|
| <ul style="list-style-type: none"> Material: 316L Stainless Steel Finish: 0.8RA or better Pressure/Temperature: See above (temp according to seal material) Associated standards: BS 4825 : Part 3 : 1991 (1" to 4" inclusive) | <ul style="list-style-type: none"> Tolerance: +/- 0.5mm Seals: EPDM, Nitrile, Silicone, Platinum Cured Silicone, Encapsulated & Solid PTFE, Viton®
<small>Viton® is a registered trademark of DuPont Dow Elastomers</small> |
| <ul style="list-style-type: none"> Applications : Clamp fittings are suitable for beverage, fine chemical, pharmaceutical and biotech applications, where crevice free conditions are critical. | |

- We stock a comprehensive range of clamp fittings including unions, ferrules, bends, tees, reducers, hoseliners and adaptors
- Components can be fabricated to customer specification
- Fabrication capabilities include frameworks, skid mounted systems, manifolds, jacketed assemblies, adaptors, flowplates and spool pieces.
- In-house services include machining, welding, fabrication, polishing.

D5019-V02

NOTES

- Dimensions are provided in good faith but maybe subject to change
- Seals must be chosen for required operating medium & temperature

(T) +44 (0)1792 883 882
 (F) +44 (0)1792 886 049
 (E) info@axiumprocess.com
 (W) www.axiumprocess.com