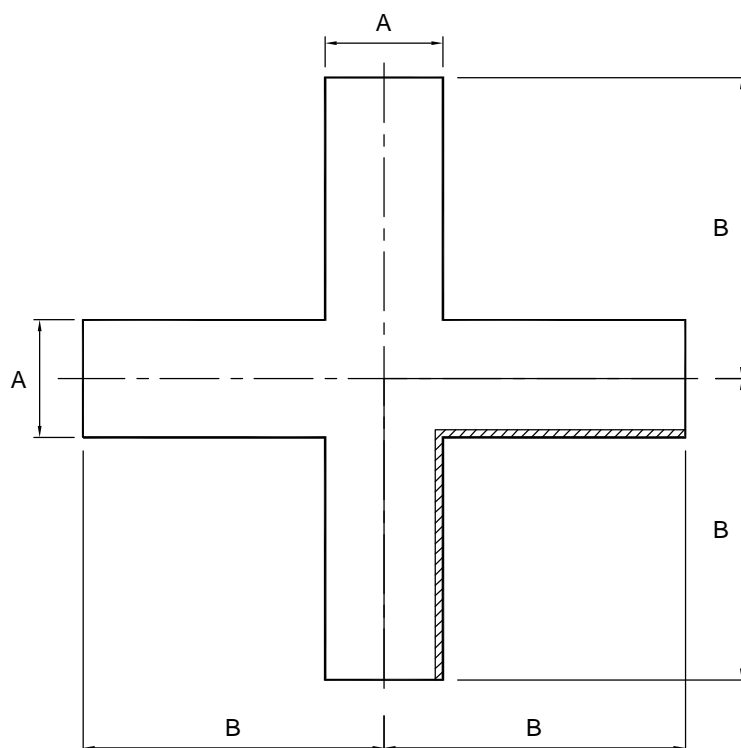


Plain-ended equal cross piece - 316L

Nom size	A	B	Max Op Pressure (bar) @ 20°C	Stock No
1"	25.4	65.0	10	8083-6026
1½"	38.1	85.0	10	8083-6038
2"	50.8	110.0	10	8083-6051
2½"	63.5	135.0	10	8083-6064
3"	76.2	155.0	10	8083-6076
4"	101.6	195.0	10	8083-6102



Technical Data:

- Material: 316L Stainless Steel
- Finish: 0.8RA or better
- Pressure: See above
- Associated standards: BS 4825 : Part 2 : 1991, ASTM A269, ASTM A270, ASTM A312
- Tolerance: +/- 0.5mm

- We stock a comprehensive range of plain-ended fittings including bends, tees, reducers, "Y" pieces, and hositails
- Components can be fabricated to customer specification
- Fabrication capabilities include frameworks, skid mounted systems, manifolds, jacketed assemblies, adaptors, flowplates and spool pieces.
- In-house services include machining, welding, fabrication, polishing.

8083 - V01

FORM No:FM002-V02

NOTES

- Dimensions are provided in good faith but maybe subject to change
- Seals must be chosen for required operating medium & temperature

Axium Process Ltd
Hendy Industrial Estate
Hendy, Swansea
SA4 0XP UK

(T) +44 (0)1792 883 882
 (F) +44 (0)1792 886 049
 (E) info@axiumprocess.com
 (W) www.axiumprocess.com