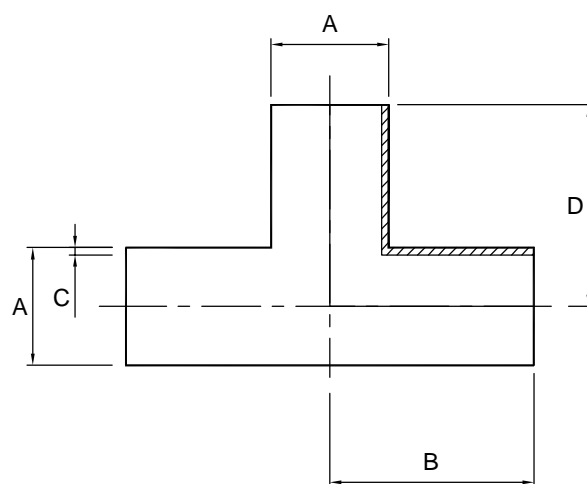


Plain-ended equal tee - 316L

Nom size	A	B	C	D	Max Op Pressure (bar) @ 20°C	Stock No
1/2"	12.7	38.0	1.6	38.0	10	8080-6013
3/4"	19.1	46.0	1.6	46.0	10	8080-6019
1"	25.4	43.5	1.6	43.5	10	8080-6026
1 1/2"	38.1	63.5	1.6	63.5	10	8080-6038
2"	50.8	88.5	1.6	88.5	10	8080-6051
2 1/2"	63.5	113.5	1.6	113.5	10	8080-6064
3"	76.2	133.5	1.6	133.5	10	8080-6076
4"	101.6	173.5	2.0	173.5	10	8080-6102



Technical Data:

- Material: 316L Stainless Steel
- Finish: 0.8RA or better
- Pressure: See above
- Associated standards: BS 4825 : Part 2 : 1991, ASTM A269, ASTM A270, ASTM A312
- Tolerance: +/- 0.5mm

- We stock a comprehensive range of plain-ended fittings including bends, reducers, "Y" pieces, hosetails and equal cross pieces
- Components can be fabricated to customer specification
- Fabrication capabilities include frameworks, skid mounted systems, manifolds, jacketed assemblies, adaptors, flowplates and spool pieces.
- In-house services include machining, welding, fabrication, polishing.

8080-V01

FORM No:FM002-V02

NOTES

- Dimensions are provided in good faith but maybe subject to change
- Seals must be chosen for required operating medium & temperature

Axium Process Ltd
Hendy Industrial Estate
Hendy, Swansea
SA4 0XP UK

(T) +44 (0)1792 883 882
 (F) +44 (0)1792 886 049
 (E) info@axiumprocess.com
 (W) www.axiumprocess.com