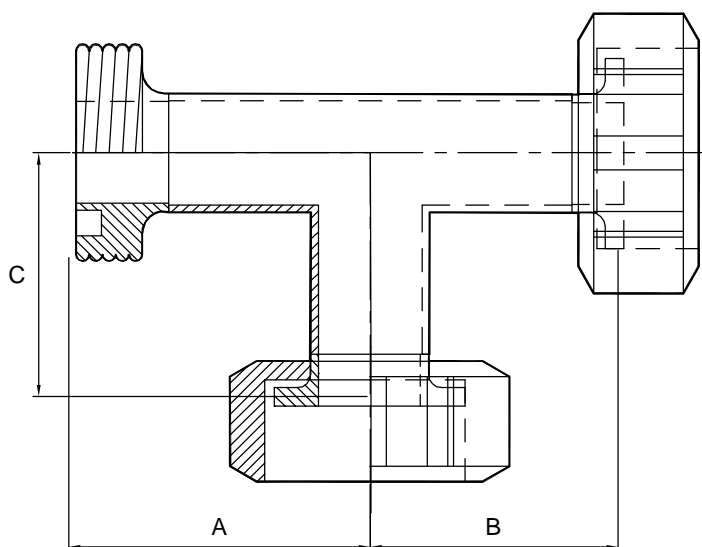


SMS equal tee - M/F, branch F - 316

Nom size	A	B	Max Op Pressure (bar) @ 150°C	Stock No
1"	58.5	51.0	10	3080-5026
1½"	83.5	72.5	10	3080-5038
2"	108.5	97.5	10	3080-5051
2½"	137.5	122.5	10	3080-5064
3"	157.5	143.5	10	3080-5076
4"	208.5	185.5	10	3080-5102



Technical Data:

- Material: 316 Stainless Steel
- Finish: 0.8RA or better
- Pressure/Temperature: See above (temp according to seal material)
- Associated standards: SMS1148
- Applications : SMS fittings are suitable for frequently dismantled systems
- Tolerance: +/- 0.5mm
- Seals: EPDM, Silicone, Nitrile,

- We stock a comprehensive range of SMS fittings including maleparts, nuts, liners, blanks, seals, bends, tees, hoseliners, and reducers
- Components can be fabricated to customer specification
- Fabrication capabilities include frameworks, skid mounted systems, manifolds, jacketed assemblies, adaptors, flowplates and spool pieces.
- In-house services include machining, welding, fabrication, polishing.

3080 - V01

NOTES

- Dimensions are provided in good faith but maybe subject to change
- Seals must be chosen for required operating medium & temperature

FORM No:FM002-V02

Axiom Process Ltd
Hendy Industrial Estate
Hendy, Swansea
SA4 0XP UK

 +44 (0)1792 883 882
 +44 (0)1792 886 049
 info@axiumprocess.com
 www.axiumprocess.com